



# Mat-Su Interfaith Hospitality Network

## CONTENTS

EIN: 68-0510566  
Report Generated on: 08/16/2024

---

Executive Summary	2
Programs & Results	4
Financial Review	8
Operations & Leadership	10

## APPENDIX

---

Key Documents	19
Charity Check Report	20

# Mat-Su Interfaith Hospitality Network



aka Family Promise Mat-Su, fka Mat-Su Valley Interfaith Hospitality Network  
Wasilla, AK  
www.fpm-su.com  
(907)357-6160

[View GuideStar Profile](#)



## MISSION

Family Promise mobilizes community resources and local congregations to provide compassionate care through shelter, meals, and case management to families without housing.

## EIN

68-0510566

## EXECUTIVE DIRECTOR

Ginger Bear

## RULING YEAR

2002

## BOARD CHAIR

Dave Rose

## IRS SUBSECTION

501(c)(3) Public Charity

## SUBJECT AREA

Shelter and residential care

## FOUNDING YEAR

2002

Homeless services

## MAIN ADDRESS

2700 E. Broadview Ave Suite  
102  
Wasilla, AK  
99654

## NTEE Code

Homeless Services/Centers  
(P85)

Temporary Shelter For the  
Homeless (L41)

Other Housing, Shelter N.E.C.  
(L99)

## AFFILIATION TYPE

Independent Organization

## CONTACT

Ginger Bear, Executive Director  
(907) 357-6160  
promise@mtaonline.net

## PROGRAMS

### 1. Family Transitional Housing

Population(s) served:Families

### 2. Outreach

Population(s) served:Economically disadvantaged people

---

## POPULATIONS SERVED

### 1. Families

### 2. Homeless people

## COMPLIANCE

- ✓ IRS Pub 78 Verified as of August 2024
- ✓ IRS BMF 509(a) (1) as of August 12, 2024
- ✗ A-133 Audit Required/Performed?
- ✓ Conflict of Interest Policy
- ✓ Written whistleblower policy

Section 509(a)(1) organization as referred to in Section 170(b)(1)(A)(vi)

---

## TRANSPARENCY MEASURES

- ✓ Board Practices Reported?
- ✓ Diversity Data Reported?
- 10** Number of Independent Board Members

# Programs & Results

---

## PROGRAMS

Source: Self-Reported by Organization, April 2024

---

### Family Transitional Housing

**Population(s) Served:**

Families

Our shelter program mobilizes community resources and congregations to provide compassionate care through shelter, meals, and case management to families without housing. Homeless children and their parent(s) are sheltered and case management helps them regain their self-sufficiency and housing in an average of 60 days after entering our program. We have a success rate of approximately 80% graduation into housing. We also have a pet boarding facility at our Center so families can keep their pets while in our shelter.

---

### Outreach

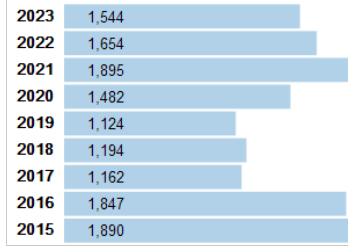
**Population(s) Served:** n/a

Our outreach program includes providing showers, laundry, and meals to our street homeless population. Beginning January 2023, our outreach will include evening meals for re-entrants. We also provide clothing to anyone in need.

## RESULTS

### Number of bed nights (nights spent in shelter)

#### TOTALS BY YEAR



Population(s) Served: Families, Homeless people

Related program: Family Transitional Housing

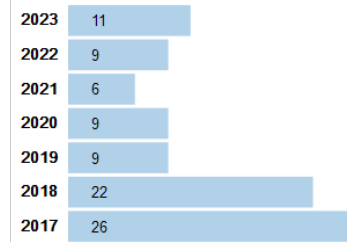
### Number of families assisted with rent or mortgage to avoid eviction

Population(s) Served: No target populations selected

Related program: Family Transitional Housing

### Number of low-income families housed in affordable, well-maintained units as a result of the nonprofit's efforts

#### TOTALS BY YEAR



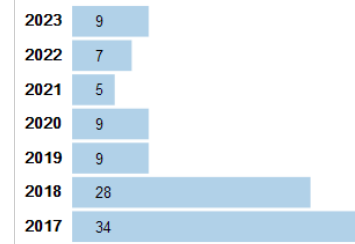
Population(s) Served: Families, Economically disadvantaged, low-income, and poor people

Related program: Family Transitional Housing

Notes: The Alaska Rent Relief, Mortgage Relief, and Stabilization programs have been in place since March 2021. This could account for the low 2021 numbers for our agency's placement numbers.

### Number of households that obtain/retain permanent housing for at least 6 months

#### TOTALS BY YEAR



Population(s) Served: Adults

Related program: Family Transitional Housing



---

## CHARTING IMPACT

---

### What is the organization aiming to accomplish?

Our goals are to:

1. Mobilize community resources and local congregations to provide holistic care (mind, body, spirit) to families without housing.
2. Provide resources for supports in the community that can contribute to the success of our families upon graduating our program.
3. Provide peer-to-peer support for children in order to reduce the effects of ACE's they have experienced.
4. Reduce the number of homeless children in our community.

---

### What are the organization's key strategies for making this happen?

Through training and close communication, our staff and volunteers coordinate logistics, transportation, meals, family activities, and overnight hosts. Our Shelter Liaison helps families connect with community resources to help them stabilize during the transition from homelessness to housing and beyond. Such resource include mental health providers, medical attention, car repairs, child care, public assistance, and the like. Our volunteers serve as several contacts for our families, one being the peer-to-peer contact. Resilience is created through learning coping skills, and has shown to be a key factor for overcoming the effects of Adverse Childhood Experiences (ACE's). As a result, it is our hope to end the generational habits and reduce the number of homeless children in our community. Other strategies include our annual fundraisers, Cardboard City and Comfort Food Cook-off. This past year we have included our second annual garage sale and started an on-line auction.

---

### What are the organization's capabilities for doing this?

Through charitable donations, foundations, fundraisers, grants, and events we are able to finance transportation (gasoline, registration, driver's license), meals (@12.50 per meal x 3/day), first month's rent (\$800 maximum assistance) for shelter guests or qualifying community members, rent (@\$800 maximum assistance) for individuals or families who have received an eviction notice, and utilities (@\$500 maximum assistance) that are in jeopardy of being shut off due to non-payment.

---

### What have and haven't they accomplished so far?

In 2021 Family Promise Mat-Su provided 1,194 bed nights. And, during the Fiscal Year 2021, prevented 176 families from becoming homeless. Since January 2022 we have provided 932 bed nights for 13 families. And, have prevented 145 families from becoming homeless.

# Financials

## FINANCIALS QUICK VIEW

Surpluses in last 5 years	2
Negative Net Assets in past 5 years	0

FISCAL YEAR START: 01/01

FISCAL YEAR END: 12/31

## Financial Trends Analysis

### Business Model Indicators

Created in Partnership with



Profitability	2019	2020	2021	2022	2023
Unrestricted surplus (deficit) before depreciation	-\$3,068	\$94,131	-\$97,005	\$547,533	-\$96,211
As a % of expenses	-1.2%	35.5%	-29.1%	122.1%	-25.4%
Unrestricted surplus (deficit) after depreciation	-\$8,088	\$89,333	-\$101,293	\$532,255	-\$114,377
As a % of expenses	-3.2%	33.0%	-30.0%	114.8%	-28.8%

### Revenue Composition

Total revenue (unrestricted & restricted)	\$244,155	\$359,660	\$235,997	\$987,436	\$283,770
Total revenue, % change over prior year	-7.4%	47.3%	-34.4%	318.4%	-71.3%
Program services revenue	0.0%	0.0%	0.0%	0.0%	2.2%
Membership dues	0.0%	0.0%	0.0%	0.0%	0.0%
Investment income	0.0%	0.0%	0.0%	0.0%	0.0%
Government grants	18.9%	21.9%	0.0%	0.0%	0.0%
All other grants and contributions	81.1%	78.1%	100.0%	97.5%	88.0%
Other revenue	0.0%	0.0%	0.0%	2.5%	9.8%

### Expense Composition

Total expenses before depreciation	\$247,223	\$265,529	\$333,002	\$448,508	\$379,440
Total expenses, % change over prior year	7.5%	7.4%	25.4%	34.7%	-15.4%
Personnel	51.0%	40.5%	42.9%	56.6%	39.4%
Professional Fees	3.1%	4.4%	2.1%	1.2%	1.5%
Occupancy	5.5%	11.3%	9.8%	5.5%	34.0%
Interest	0.0%	0.0%	0.0%	0.0%	1.6%
Pass-Through	0.0%	0.0%	0.0%	0.0%	0.0%
All other expenses	40.5%	43.7%	45.2%	36.7%	23.6%



# Financial Trends Analysis, continued

## Moving Toward Full Cost Coverage

Full Cost Components (estimated)	2019	2020	2021	2022	2023
Total Expenses (after depreciation)	\$252,243	\$270,327	\$337,290	\$463,786	\$397,606
One Month of Savings	\$20,602	\$22,127	\$27,750	\$37,376	\$31,620
Debt Principal Repayment	\$0	\$0	\$0	\$0	\$0
Fixed Asset Additions	\$0	\$0	\$0	\$607,500	\$0
Total Full Costs (estimated)	\$272,845	\$292,454	\$365,040	\$1,108,662	\$429,226

## Capital Structure Indicators

### Liquidity

Months of cash	4.0	8.3	3.0	0.6	1.5
Months of cash and investments	4.0	8.3	3.0	0.6	1.5
Months of estimated liquid unrestricted net assets	4.1	8.1	2.9	0.6	1.5

### Balance Sheet Composition

Cash	\$82,985	\$183,013	\$82,876	\$22,616	\$47,763
Investments	\$0	\$0	\$0	\$0	\$0
Receivables	\$0	\$0	\$0	\$0	\$1,306
Gross land, buildings, and equipment (LBE)	\$227,199	\$227,199	\$227,199	\$834,699	\$834,699
Accumulated depreciation (% of LBE)	26.6%	28.7%	30.6%	10.2%	12.3%
Liabilities (as % of assets)	0.0%	1.4%	0.6%	0.2%	15.9%
Unrestricted net assets	\$250,991	\$340,324	\$239,031	\$0	\$0
Temporarily restricted net assets	N/A	N/A	N/A	N/A	N/A
Permanently restricted net assets	N/A	N/A	N/A	N/A	N/A
Total restricted net assets	\$0	\$0	\$0	\$0	\$0
Total net assets	\$250,991	\$340,324	\$239,031	\$771,286	\$656,909

## Key Data Checks

Material Data Errors	2019	2020	2021	2022	2023
	No	No	No	No	No

Note: This issue is relevant to a small number of organizations: The nonprofit subject(s) of this report may have affiliates. The Form 990 data may not include information about any or all potential affiliates. If an organization does have affiliates and these affiliates have substantial financial activity, the financial data in this report may not present a comprehensive picture of the nonprofit's financial condition. Please consult the 990s of any potentially related affiliates for additional information.

- [Formulas for key metrics](#)
- ['Key Revenue & Expense Data from Form 990'](#)
- ['Key Balance Sheet Data from Form 990'](#)

# Operations

Source: Self-Reported by Organization, April 2024

## EXECUTIVE DIRECTOR

### Ginger Bear

Ginger Bear received her Bachelor of Science degree in 2000 from the University of Central Arkansas. She has worked as a Case Manager for most of her career. She worked for Family Promise in Little Rock, Arkansas in 2010, and began working as the van driver for Family Promise Mat-Su in 2017, moving into the Case Manager's position later that year, currently serving as the Executive Director. She serves on the Mat-Su Coalition on Housing and Homelessness Operating Board, is an active member of the AK Homeless Management Information System (AKHMIS) Board, and sits on a steering committee for the Mat-Su Health Foundation.

## NUMBER OF EMPLOYEES

### BOARD CHAIR

Source: IRS Form 990

### Dave Rose

Mat-Su Coalition on Housing and Homelessness

Term: 2022 - 2025

## BOARD MEMBERS

### Lorraine Curtis

Mat-Su Health Services

### Kathleen Yerbich

Mat-Su School District

### Dave Rose

Valley Charities

### Lisa McConarty

Headquarters Custom Embroidery

### Keith Smith

Self-employed

### Melanie Kopperud

Retired

### Jeff Schultz

Pilot

## OFFICERS, DIRECTORS, TRUSTEES, AND KEY EMPLOYEES

FISCAL YEAR 2022

Name	Title	Compensation	Other	Related
Virginia Bear	EXECUTIVE DIRECTOR	\$52,000	\$0	\$0
Israel Nelson	CHAIR	\$0	\$0	\$0
Mike Swanson	VICE CHAIR	\$0	\$0	\$0
Kathleen Yerbich	SECRETARY	\$0	\$0	\$0
Debbie Melton	TREASURER	\$0	\$0	\$0
Lorraine Curtis	TRUSTEE	\$0	\$0	\$0
Lisa McConarty	TRUSTEE	\$0	\$0	\$0
Dee Hess	TRUSTEE	\$0	\$0	\$0
Rene Contrares	TRUSTEE	\$0	\$0	\$0
Yolanda Thomas	TRUSTEE	\$0	\$0	\$0
David Rose	TRUSTEE	\$0	\$0	\$0

## OFFICERS, DIRECTORS, TRUSTEES, AND KEY EMPLOYEES

FISCAL YEAR 2021

Name	Title	Compensation	Other	Related
Virginia Bear	EXECUTIVE DI	\$52,000	\$0	\$0
John Weaver	CHAIR	\$0	\$0	\$0
Israel Nelson	VICE CHAIR	\$0	\$0	\$0
Mike Swanson	TREASURER	\$0	\$0	\$0
Kathleen Yerbich	SECRETARY	\$0	\$0	\$0
Lorraine Curtis	TRUSTEE	\$0	\$0	\$0
Lisa McConarty	TRUSTEE	\$0	\$0	\$0
Dee Hess	TRUSTEE	\$0	\$0	\$0
Rene Contraras	TRUSTEE	\$0	\$0	\$0
Yolanda Thomas	TRUSTEE	\$0	\$0	\$0
Debbie Melton	TRUSTEE	\$0	\$0	\$0

## OFFICERS, DIRECTORS, TRUSTEES, AND KEY EMPLOYEES

FISCAL YEAR 2020

Name	Title	Compensation	Other	Related
Virginia Bear	EXECUTIVE DI	\$52,397	\$0	\$0
John Weaver	PRESIDENT	\$0	\$0	\$0
Israel Nelson	VICE PRESIDE	\$0	\$0	\$0
Mike Swanson	TREASURER	\$0	\$0	\$0
Kathleen Yerbich	SECRETARY	\$0	\$0	\$0
Theodore Garcia	TRUSTEE	\$0	\$0	\$0
Debbie Melton	TRUSTEE	\$0	\$0	\$0
Lorraine Curtis	TRUSTEE	\$0	\$0	\$0
Yolanda Thomas	TRUSTEE	\$0	\$0	\$0
Lisa McConarty	TRUSTEE	\$0	\$0	\$0

## OFFICERS, DIRECTORS, TRUSTEES, AND KEY EMPLOYEES

FISCAL YEAR 2019

Name	Title	Compensation	Other	Related
Virginia Bear	EXECUTIVE DI	\$38,995	\$0	\$0
Laurie Kari	OUTGOING EXE	\$10,321	\$0	\$0
Lorraine Curtis	TRUSTEE	\$0	\$0	\$0
Theo Garcia	TRUSTEE	\$0	\$0	\$0
Debbie Melton	TRUSTEE	\$0	\$0	\$0
Israel Nelson	VICE PRESIDE	\$0	\$0	\$0
Kathy Sayer	TRUSTEE	\$0	\$0	\$0
Mike Swanson	TREASURER	\$0	\$0	\$0
John Weaver	BOARD PRESID	\$0	\$0	\$0
Katheen Yerbich	SECRETARY	\$0	\$0	\$0

## Paid Preparers

FISCAL YEAR 2023

---

Firm Name	Firm EIN	Firm Address	Firm Phone
HRB TAX GROUP INC	43-1871840	391 E PARKS, WASILLA AK 99654 USA	907-376-3555

---

## Paid Preparers

FISCAL YEAR 2022

---

Firm Name	Firm EIN	Firm Address	Firm Phone
HRB TAX GROUP INC	431871840	1301 MAIN ST STE 102C, KANSAS CITY MO 64105	8004725625

---

## Paid Preparers

FISCAL YEAR 2021

---

Firm Name	Firm EIN	Firm Address	Firm Phone
FOSTER AND COMPANY LLC	371709475	804 E FAIRVIEW LOOP, WASILLA AK 99654	9073766901

---

## BOARD LEADERSHIP PRACTICES

GuideStar worked with BoardSource, the national leader in nonprofit board leadership and governance, to create this section, which enables organizations and donors to transparently share information about essential board leadership practices.

---

### BOARD ORIENTATION & EDUCATION

Does the board conduct a formal orientation for new board members and require all board members to sign a written agreement regarding their roles, responsibilities, and expectations? Yes

---

### CEO OVERSIGHT

Has the board conducted a formal, written assessment of the chief executive within the past year? Yes

---

### ETHICS & TRANSPARENCY

Have the board and senior staff reviewed the conflict-of-interest policy and completed and signed disclosure statements in the past year? Yes

---

### BOARD COMPOSITION

Does the board ensure an inclusive board member recruitment process that results in diversity of thought and leadership? Yes

---

### BOARD PERFORMANCE

Has the board conducted a formal, written self-assessment of its performance within the past three years? Yes



## Organizational Demographics

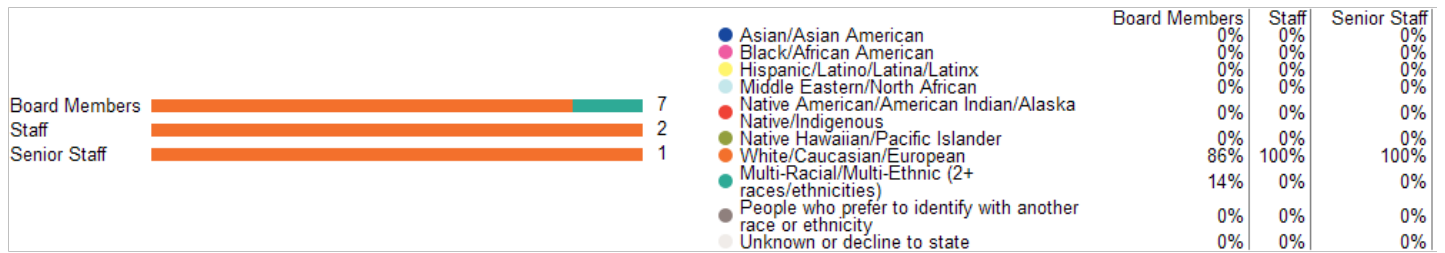
Who works and leads organizations that serve our diverse communities? This organization has voluntarily shared information to answer this important question and to support sector-wide learning. GuideStar partnered on this section with CHANGE Philanthropy and Equity in the Center.

### Leadership

The organization's leader identifies as:

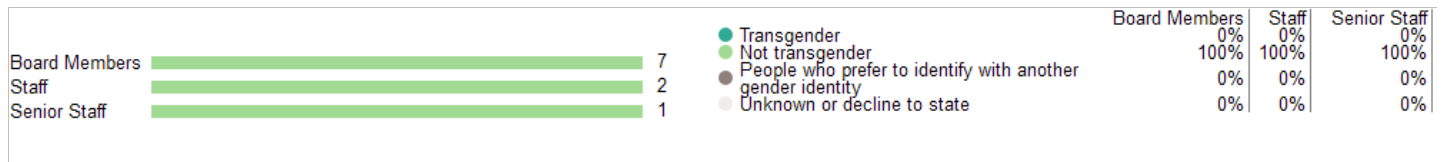
Race & Ethnicity	White/Caucasian/European
Gender Identity	Female, Not transgender
Sexual Orientation	Heterosexual or Straight
Disability Status	Person without a disability

### Race & Ethnicity



### Gender Identity

#### Transgender Identity



### Sexual Orientation

#### Disability

We do not display staff or senior staff disability information for organizations with fewer than 15 staff.

**Equity Strategies** *Last Updated: 09/18/2019*

Candid partnered with Equity in the Center - a project that works to shift mindsets, practices, and systems within the social sector to increase racial equity - to create this section. [Learn More](#)

**Data**

✓ We have long-term strategic plans and measurable goals for creating a culture such that one's race identity has no influence on how they fare within the organization.

**Policies and processes**

✓ We engage everyone, from the board to staff levels of the organization, in race equity work and ensure that individuals understand their roles in creating culture such that one's race identity has no influence on how they fare within the organization.

# Appendix

## Key Documents

IRS Forms 990

[2023 990](#)

[2022 990](#)

[2021 990](#)

[2020 990](#)

[2019 990](#)

IRS Forms 990T

Not Available

Audited Financial Statements

[2021 Audited Financial Statement](#)

[2019 Audited Financial Statement](#)

Key Organization Documents

[Letter of Determination](#)

['Key Revenue & Expense Data from Form 990'](#)

['Key Balance Sheet Data from Form 990'](#)

# GuideStar Charity Check

## Mat-Su Interfaith Hospitality Network

Aka Family Promise Mat-Su

2700 E. Broadview Ave Suite 102  
Wasilla, AK 99654

- ✓ Foundation Status Code: PC\*
- ✓ Public charity described in section 509(a)(1) or (2)

## IRS Publication 78 Details

✓ IRS Pub 78  
verified

Organization name	Location	Most recent IRS Publication 78
Mat-Su Valley Interfaith Hospitality Network	Wasilla, AK	August 2024
EIN	<a href="#">Deductibility status description</a>	Verified with most recent Internal Revenue Bulletin
68-0510566	A public charity (50% deductibility limitation).	August 12, 2024

## IRS Business Master File Details

IRS BMF 509(a)(1)

Organization name	Most recent IRS BMF	Reason for Non-Private Foundation Status
MAT-SU VALLEY INTERFAITH HOSPITALITY NETWORK	August 12 2024	Section 509(a)(1) organization as referred to in Section 170(b)(1)(A)(vi)
EIN	IRS subsection	Ruling date
68-0510566	This organization is a <a href="#">501(c)(3) Public Charity</a>	08/2002
Foundation Code	Foundation Code Description	
15	Organization which receives a substantial part of its support from a governmental unit or the general public	

This organization was not included in the Office of Foreign Assets Control Specially Designated Nationals (SDN) list.

On September 8, 2011, the IRS issued [regulations](#) which eliminated the advance ruling process for a section 501(c)(3) organization. [Learn more](#)

\* The Foundation Status Code is the code that foundations are required to provide for each grantee annually on part XV of Form 990PF. Note that this code cannot be derived in some cases (e.g., supporting organizations for which 'type' can't be determined).

[IRS Revenue Procedure 2011-33](#) allows grantors to rely on third-party resources, such as GuideStar Charity Check, to obtain required Business Master File (BMF) data concerning a potential grantee's public charity classification under section 509 (a) (1), (2) or (3).

## GuideStar Charity Check Data Sources

-GuideStar acquires all IRS data directly from the Internal Revenue Service.

-[IRS Publication 78 \(Cumulative List of Organizations\)](#) lists organizations that have been recognized by the Internal Revenue Service as eligible to receive tax-deductible contributions.

-The [IRS Internal Revenue Bulletin \(IRB\)](#) lists changes in charitable status since the last Publication 78 release. Between the release of IRS Publication 78 and the subsequent IRS Internal Revenue Bulletin, the IRB date will reflect the most recent release date of IRS Publication 78.

-The [IRS Business Master File](#) lists approximately 1.7 million nonprofits registered with the IRS as tax-exempt organizations.

-The [IRS Automatic Revocation of Exemption List](#) contains organizations that have had their federal tax-exempt status automatically revoked for failing to file an annual return or notice with the IRS for three consecutive years.

-The Foundation Status Code is a value derived by mapping the codes found on the [990PF filing instructions](#) to the corresponding codes in the IRS BMF. Note that not all codes are able to be mapped due to insufficient data.

-The Office of Foreign Assets Control (OFAC) [Specially Designated Nationals \(SDN\) list](#) organizations that are owned or controlled by targeted individuals, groups, and entities, such as terrorists or narcotics traffickers. Their assets are blocked and U.S. persons are generally prohibited from dealing with them.